



# INSTALLATION INSTRUCTIONS

**PART No.**

**FB25220**

Jeep® '18-Current JL Wrangler  
**Tailgate Table**



## REQUIRED TOOLS

- Drill
- 9/16" Drill Bit
- 4mm Allen
- 5mm Allen
- Tape Measure
- Pen/Marker

## KIT CONTAINS

- Tailgate Table
- Cutting Board
- M6 Button Head Bolt
- M8 Button Head Bolt
- M6 Oversized Washer
- M8 Washer
- Spacer

## QTY

- 1
- 1
- 3
- 1
- 3
- 1
- 3

#### 1) REMOVE AIR VENT

Open your vehicle's tailgate and begin removing its air vent interior panels, by carefully and evenly pulling out its body clips.

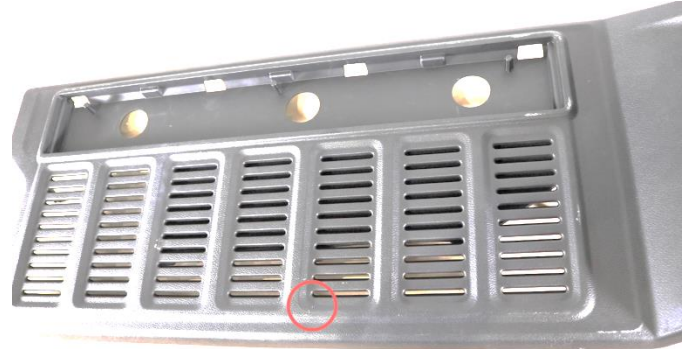
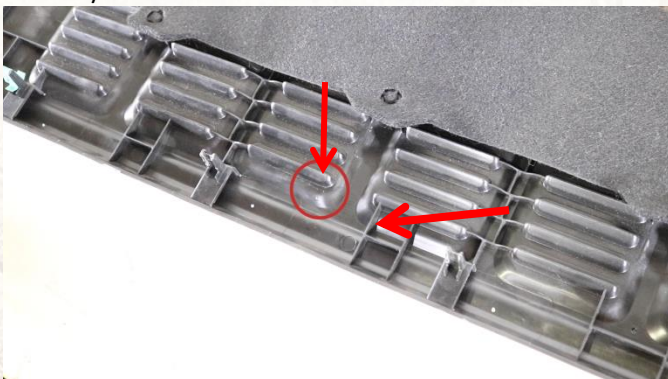


The installation will be using these 4 mounting points.



#### 2) MEASURE & DRILL

Flip the main panel over. With a tape measure, measure 1-5/8" left of the shown plastic rib, and down 3/8" from the shown vent.



Mark this intersecting point. This will be your drill point.

With a drill, drill a pilot hole and work your way up to a 9/16" drill bit.



#### 3) REPLACE & INSTALL

Reinstall the main panel and ensure the drilled hole lines up with the lowest mounting point.



Open the table and place it up against the panel.

With three of the smaller bolts, washers, and spacers, secure the top three holes with a 4mm Allen wrench.



Finally, with the larger bolt and washer, secure the bottom drilled hole with a 5mm Allen Wrench.

- 4) **ENJOY YOUR NEW FISHBONE OFFROAD JL TAILGATE TABLE!**

